

ED 033 221

VT 009 388

A Guide to Federal Financial Aid for Dental Health: Services, Facilities, Training, and Research:  
National Inst. of Health (DHEW), Bethesda, Md. Div. of Dental Health.

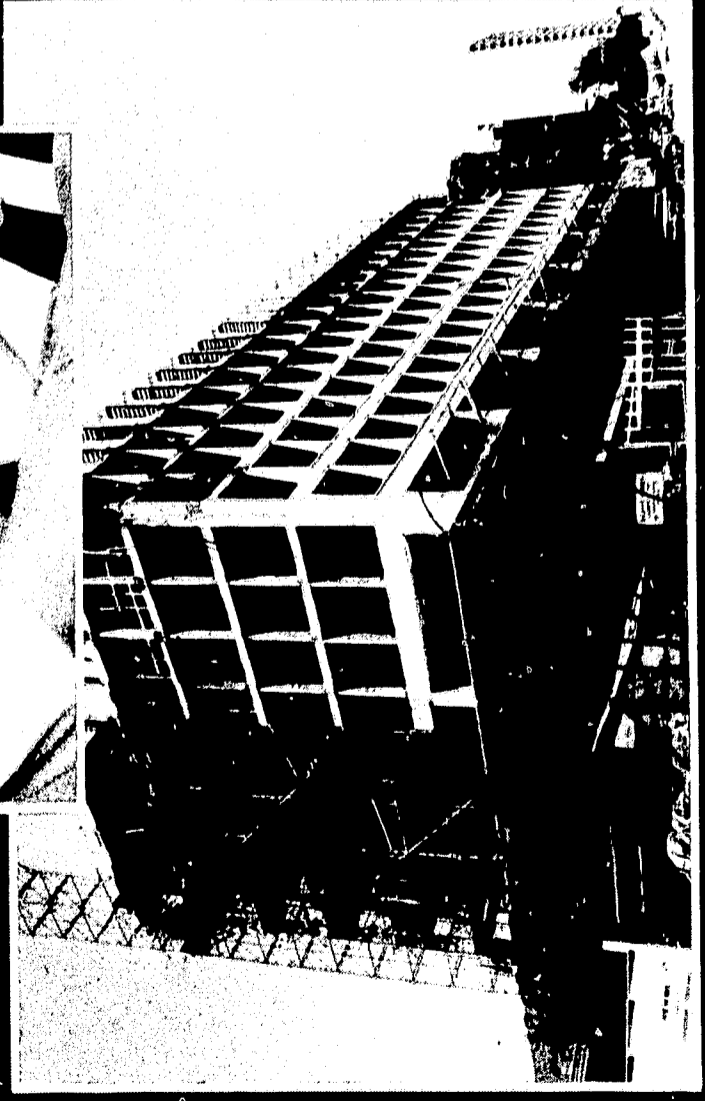
Pub Date 69

Note - 50p.

EDRS Price MF -\$0.25 HC -\$2.60

Descriptors - \*Dentistry, \*Directories, \*Federal Aid, \*Health Occupations Education, Health Services, Physical Facilities, \*Program Descriptions, Research

Federal financial aid is available for a wide range of dental activities, including the provision of services, construction of facilities, education and training of professional and auxiliary personnel, and the conduct of research and demonstration projects. This publication contains a brief description of the purpose of each federal aid program, who may apply, how funds are provided and addresses for obtaining additional information. The information is organized into five major sections. "Grants to States" covers programs administered by the Public Health Service (PHS), Office of Education (OE), and the Social and Rehabilitation Service (SRS). "Project Grants" describes programs administered by PHS, the Appalachian Regional Commission, Housing and Urban Development, National Science Foundation, Office of Economic Opportunity, OE, SRS, and Veterans Administration (VA). "Training Grants" covers programs administered by PHS, OE, Department of Labor, SRS, and VA. "Construction Grants" lists programs administered by PHS, Appalachian Regional Commission, Department of Agriculture, Housing and Urban Development, National Science Foundation, OE, and VA. "Student Loans and Scholarships" covers programs of PHS, OE, and VA. (JK)



# A Guide to Federal Financial Aid for

# DENTAL HEALTH

- Services
- Facilities
- Training
- Research

U.S. DEPARTMENT OF HEALTH, EDUCATION, AND WELFARE  
Public Health Service • National Institutes of Health

**DISCRIMINATION PROHIBITED**—Title VI of the Civil Rights Act of 1964 states: “No person in the United States shall, on the ground of race, color, or national origin, be excluded from participation in, be denied the benefits of, or be subjected to discrimination under any program or activity receiving Federal financial assistance.” Therefore, the Federal financial assistance programs mentioned in this publication, like every program or activity receiving financial assistance from the Department of Health, Education, and Welfare, must be operated in compliance with this law.

*A Guide to Federal Financial Aid*  
*for*  
***DENTAL HEALTH***

*Services*  
*Facilities*  
*Training*  
*Research*

**U.S. DEPARTMENT OF HEALTH, EDUCATION & WELFARE  
OFFICE OF EDUCATION**

**THIS DOCUMENT HAS BEEN REPRODUCED EXACTLY AS RECEIVED FROM THE  
PERSON OR ORGANIZATION ORIGINATING IT. POINTS OF VIEW OR OPINIONS  
STATED DO NOT NECESSARILY REPRESENT OFFICIAL OFFICE OF EDUCATION  
POSITION OR POLICY.**

**U.S. DEPARTMENT OF HEALTH, EDUCATION, AND WELFARE  
Public Health Service • National Institutes of Health  
Bureau of Health Professions Education and Manpower Training  
Division of Dental Health • Bethesda, Maryland 20014**

1969

U.S. Government Printing Office  
Washington, D.C. 20401

# *Preface*

Important changes have taken place in the financing of health care in the past few years. Recent Federal legislation has authorized additional funds for the expansion of existing health programs and has provided authority for the initiation of several new ones. The growing acceptance of dental health as an integral part of total health has enhanced greatly the opportunity to expand the scope of health programs by including activities directed toward the improvement of oral health. This directory has been compiled as a guide to potential sources of Federal funds which are available for the support of dental activities. Some of the sources included have been authorized expressly for the improvement of dental health; other aid is designed to support health-related activities with possible dental implications.

Federal financial aid is available for a wide range of dental activities, including the provision of services, construction of facilities, education and training of professional and auxiliary personnel, and the conduct of research and demonstration projects. Each Federal aid program is administered under specific regulations. This publication contains only a brief description of the purpose of each program and provides addresses where additional information may be obtained.

Sources identified are those in effect as of July 1, 1968.

Division of Dental Health, Community Programs Branch  
Edward M. Campbell, D.D.S., M.P.H., Chief  
Charles H. Hayden, D.D.S., M.P.H.

BHPEMT	Bureau of Health Professions Education and Manpower Training
CC	Crippled Children's Service
DHEW	Department of Health, Education, and Welfare
DHUD	Department of Housing and Urban Development
ESEA	Elementary and Secondary Education Act
HS and MHA	Health Services and Mental Health Administration
MCH	Maternal and Child Health Services
NDEA	National Defense Education Act
NIDR	National Institute of Dental Research
NIH	National Institutes of Health
OE	Office of Education
OEO	Office of Economic Opportunity
PHS	Public Health Service
SRS	Social and Rehabilitation Service
VA	Veterans Administration
VISTA	Volunteers in Service to America
VR	Vocational Rehabilitation Services

# *Key to Abbreviations*

# Contents

<b>GRANTS TO STATES</b>	
Public Health Service . . . . .	1
Comprehensive State Health Planning	
Comprehensive Public Health Services	
Office of Education . . . . .	1
Special Programs for Educationally Deprived Children (Title I ESEA)	
School Library Resources, Textbooks, and other Instructional Materials (Title II ESEA)	
Vocational and Technical Education	
Social and Rehabilitation Service . . . . .	2
Grants for Community Planning, Services, and Training (for activities in aging)	
Crippled Children's Services	
Maternal and Child Health Services	
Public Assistance	
Vocational Rehabilitation Services	
Innovation of Vocational Rehabilitation Services	
<b>PROJECT GRANTS</b>	
Public Health Service . . . . .	4
Areawide Health Planning	
Comprehensive Public Health Services	
Health Facilities and Services Research	
Initial Staffing of Community Mental Health Centers	
Migrant Health	



NIH General Research Support	
Regional Medical Programs	
Planning Grants for Development of Regional Medical Programs	
Establishment and Operation of Regional Medical Programs	
Health Professions Educational Assistance Improvement Grants	
Allied Health Professions Educational Assistance Improvement Grants	
Research in Biomedical Sciences—Dental	
Research in Community Health—Dental	
Appalachian Regional Commission . . . . .	8
Demonstration Health Facilities	
Housing and Urban Development . . . . .	9
Model Cities Program	
Mortgage Insurance Program	
Advances for Public Works Planning	
Grants for Advance Acquisition of Land	
National Science Foundation . . . . .	10
Basic Research	
Grants for Other Purposes Connected with Research	
Foreign Travel	
Scientific Conferences	
Specialized Research Equipment and Facilities	
Office of Economic Opportunity . . . . .	11
Community Action Programs	
Head Start	
Follow Through	

Upward Bound	
Neighborhood Health Centers	
Parent and Child Centers	
Migrant Projects	
Job Corps	
VISTA	
Work Experience Program	
Neighborhood Youth Corps	
Office of Education . . . . .	14
Vocational Education Research	
Supplementary Centers and Services Program (Title III ESEA)	
Research and Demonstration in New Educational Media	
College and Research Library Resources	
Social and Rehabilitation Service . . . . .	15
Maternal and Child Health and Crippled Children's Services	
Maternal and Child Health Services	
Crippled Children's Services	
Comprehensive Health Services for Children and Youth	
Maternity and Infant Care	
Dental Health of Children (National Children's Dental Health Program)	
Research Relating to MCH and CC Services	
Research and Development (related to aging)	
Research and Development in Vocational Rehabilitation	
Veterans Administration . . . . .	18
Exchange of Medical Information	

## TRAINING GRANTS

Public Health Service . . . . .	19
Comprehensive Health Planning—Training, Studies, and Demonstrations	
Fellowships and Research Career Program	
Graduate Training Grants (Research training)	
Dental Auxiliary Utilization Training	
Allied Health Professions	
Advanced Training	
Development Grants	
Continuing Dental Education	
Graduate Training in Public Health	
International Health Research	
NIDR Research Training Grant Program	
NIDR Fellowship Program	
Public Health Traineeships	
Awards to Individuals	
Apprenticeship Training	
General Purpose Traineeships	
Residency Programs	
Short-Term Training	
Special Purpose	
Office of Education . . . . .	25
Manpower Development and Training	
Education Professions Development	
Department of Labor . . . . .	25
Manpower Development and Training	

Social and Rehabilitation Service . . . . .	26
Specialized Training of Professional and Technical Persons (for the care of the aging)	
Training and Traineeships in Vocational Rehabilitation	
Long-Term Training	
Research Fellowships	
Short-Term Training	
Training of Professional Personnel for the Care of Crippled Children	
Training of Health Personnel	
Veterans Administration . . . . .	27
Training and Education of Health Service Personnel	
<b>CONSTRUCTION GRANTS</b>	
Public Health Service . . . . .	28
Assistance to Medical Libraries	
Health Professions Educational Facilities	
Allied Health Professions Educational Facilities	
Health Research Facilities	
Community Mental Health Centers	
Mental Retardation Facilities	
Research Centers	
University-Affiliated Clinical Facilities	
Public or Nonprofit Facilities for the Mentally Retarded	
Hospital and Medical Facilities	
Appalachian Regional Commission . . . . .	30
Demonstration Health Facilities	

Department of Agriculture . . . . .	30
Financial Assistance to Small Towns and Rural Groups	
Housing and Urban Development . . . . .	31
Basic Sewer and Water Facilities	
Neighborhood Facilities	
National Science Foundation . . . . .	31
Graduate Science Facilities	
Office of Education . . . . .	31
Area Vocational Schools	
Higher Education Facilities	
Veterans Administration . . . . .	32
Construction of Facilities for the Exchange of Medical Information	
<b>STUDENT LOANS AND SCHOLARSHIPS</b>	
Public Health Service . . . . .	33
Health Professions Student Loans	
Health Professions Scholarship Grants	
Allied Health Professions Student Loans	
Office of Education . . . . .	34
Loans to Students in Institutions of Higher Education (NDEA)	
College Work-Study Program	
Insured Loans and Interest Benefits for Higher Education Students	
Insured Loans and Interest Benefits for Vocational Students	

Veterans Administration . . . . . 34  
Educational Benefits for Veterans

**OTHER AID**

Surplus Property . . . . . 35

**FEDERAL REGIONAL OFFICES**

Department of Health, Education, and Welfare . . . . . 36  
Department of Housing and Urban Development . . . . . 37

Program	Purpose	Eligible Applicants	Matching Required	Where to Obtain Additional Information
<b>GRANTS TO STATES</b>				
<b>Public Health Service</b>				
Comprehensive State Health Planning	To assist States in comprehensive and continuing planning for their current and future health needs	State agencies designated by Governors	Federal share up to 100%	DHEW Regional Offices
Comprehensive Public Health Services*	To assist States in the initiation and expansion of State and local public health programs, including the training of personnel for State and local health work	State health and mental health authorities	Federal share 1/3 to 2/3	DHEW Regional Offices
<b>Office of Education</b>				
Special Programs for Educationally Deprived Children (Title I ESEA)	To expand and improve educational (including health) programs of local educational agencies serving areas with concentrations of children from low-income families	State educational agencies	None	Bureau of Elementary and Secondary Education, OE, DHEW, Washington, D.C. 20202
School Library Resources, Textbooks, and Other Instructional Materials (Title II ESEA)	To provide school library resources, textbooks, and other instructional materials in public and private elementary and secondary schools	State educational agencies	None	Bureau of Elementary and Secondary Education, OE, DHEW, Washington, D.C. 20202

\*Replaces grants formerly earmarked for use in meeting special disease problems

Program	Purpose	Eligible Applicants	Matching Required	Where to Obtain Additional Information
<b>GRANTS TO STATES</b>				
Vocational and Technical Education	To maintain, extend, and improve programs in vocational and technical education	State boards for vocational education	\$1 for \$1	Bureau of Adult, Vocational, and Library Resources, OE, DHEW, Washington, D.C. 20202
<b>Social and Rehabilitation Service</b>				
Grants for Community Planning, Services, and Training (for activities in aging)	To assist States in strengthening, extending, and coordinating activities in aging and help them make grants to local governmental agencies and nonprofit voluntary organizations	State agencies designated by Governors	Federal share 75% first year, 60% second year, 50% third year	Administration on Aging, SRS, DHEW, Washington, D.C. 20201
Crippled Children's Services	To extend and improve services for locating crippled children and providing care	State crippled children's agencies	\$1 for \$1	Children's Bureau, SRS, DHEW, Washington, D.C. 20201
Maternal and Child Health Services	To extend and improve services for promoting the health of mothers and children	State health agencies	\$1 for \$1	Children's Bureau, SRS, DHEW, Washington, D.C. 20201
Public Assistance (Old Age, Blind, Families with Dependent Children, Aid to Permanently and Totally Disabled, Medical Assistance to the Aged, Title XIX Medicaid)	To pay part of cost of providing financial assistance to welfare recipients and to medically indigent	State agencies making expenditures under approved plan	Varies	Medical Services Administration, SRS, DHEW, Washington, D.C. 20201



Program	Purpose	Eligible Applicants	Matching Required	Where to Obtain Additional Information
<b>GRANTS TO STATES</b>				
<b>Social and Rehabilitation Service</b>				
Vocational Rehabilitation Services	To provide rehabilitation services to the handicapped	State and territorial VR agencies	Federal share 75%	Rehabilitation Services Administration, SRS, DHEW, Washington, D.C. 20201
Innovation of Vocational Rehabilitation Services	To develop methods or techniques which are new in the State for providing vocational rehabilitation services	State and territorial VR agencies	Federal share up to 90% for first three years, 75% thereafter	Rehabilitation Services Administration, SRS, DHEW, Washington, D.C. 20201

Program	Purpose	Eligible Applicants	Matching Required	Where to Obtain Additional Information
<b>PROJECT GRANTS</b>				
<b>Public Health Service Areawide Health Planning</b>	To develop comprehensive health plans for regions, metropolitan areas, or other local areas	Public or private nonprofit agencies	Federal share up to 75%	DHEW Regional Offices
<b>Comprehensive Public Health Services*</b>	To provide services and related training to meet health needs of limited geographic scope or of specialized regional or national significance, or to develop and support for an initial period new programs of health services	State or local agencies or private nonprofit organizations	Varies with type of project	DHEW Regional Offices
<b>Health Facilities and Services Research</b>	To develop new methods or improve existing methods of providing health services directed toward improving the organization, coordination, and cost efficiency of health service systems (and related training)	State or public agencies or private nonprofit organizations	Varies	National Center for Health Services Research and Development, PHS, DHEW, 800 N. Quincy Street, Arlington, Va. 22203

\*Replaces project grants formerly earmarked for use in meeting special disease problems

Program	Purpose	Eligible Applicants	Matching Required	Where to Obtain Additional Information
<b>PROJECT GRANTS</b>				
<b>Public Health Service</b>				
Initial Staffing of Community Mental Health Centers	To meet a portion of the costs of compensation of professional and technical personnel for new centers or new services in established centers	Public or private nonprofit agencies owning or operating community mental health centers which have received a construction grant or added new services not previously provided	Federal share 30-75%	National Institute of Mental Health, HS & MHA, PHS, DHEW, 5454 Wisconsin Ave., Chevy Chase, Maryland 20203
Migrant Health	To improve health conditions and provide health services for domestic agricultural workers	State and local health departments and other public and private nonprofit agencies	No fixed ratio; grantee pays a part of the cost	Bureau of Health Services, HS & MHA, PHS, DHEW, 800 N. Quincy St., Arlington, Va. 22203

Program	Purpose	Eligible Applicants	Matching Required	Where to Obtain Additional Information
<b>PROJECT GRANTS</b>				
<b>Public Health Service NIH General Research Support</b>	To provide general research support for all institutions heavily engaged in health-related research	Schools of dentistry, medicine, osteopathy, and public health automatically eligible and other types of institutions which have been awarded a prescribed amount of appropriate NIH research grant funds	None	Division of Research Facilities and Resources, NIH, DHEW, Bethesda, Md. 20014
<b>Regional Medical Programs</b>	—Planning Grants for Development of Regional Medical Programs	Public or non-profit private organizations, universities, medical schools, or research institutions	None	Division of Regional Medical Programs, HS & MHA, PHS, DHEW, Bethesda, Md. 20014

Program	Purpose	Eligible Applicants	Matching Required	Where to Obtain Additional Information
<b>PROJECT GRANTS</b>				
<b>Public Health Service</b>				
Regional Medical Programs (continued)				
--Establishment and Operation of Regional Medical Programs	To assist in establishment and operation of regional medical programs, including renovation of equipment and facilities	Public or non-profit private organizations, universities, medical schools, or research institutions	None, except Federal share of renovation may not exceed 90%	Division of Regional Medical Programs, HS & MHA, PHS, DHEW, Bethesda, Md. 20014
Health Professions Educational Assistance Improvement Grants	To assist schools of medicine, dentistry, osteopathy, optometry, or podiatry to improve the quality of their educational programs	Public or non-profit schools of medicine, dentistry, osteopathy, optometry, or podiatry	None	Division of Dental Health, BHPEMT, NIH, PHS, DHEW, 8120 Woodmont Ave., Bethesda, Md. 20014
Allied Health Professions Educational Assistance Improvement Grants	To assist training centers to develop new or improved curriculums and otherwise improve the quality of their educational programs	Allied health professions training centers	None	Division of Dental Health, BHPEMT, NIH, PHS, DHEW, 8120 Woodmont Ave., Bethesda, Md. 20014

Program	Purpose	Eligible Applicants	Matching Required	Where to Obtain Additional Information
<b>PROJECT GRANTS</b>				
<b>Public Health Service</b>				
Research in Biomedical Sciences—Dental	To support basic and clinical research and research training relating to the causes, prevention, diagnosis, and treatment of oral diseases, as well as projects stressing the interrelationship of oral health to the total well-being of the individual	State and local health departments, other public or private nonprofit organizations, universities, and dental schools	Cost-sharing by grantee	National Institute of Dental Research, NIH, PHS, DHEW, Bethesda, Md. 20014
Research in Community Health—Dental	To provide partial support for research activities designed to establish, discover, or develop information or methods relating to the control or prevention of dental diseases and disorders or to the administration and delivery of dental health services	Universities and professional schools, State and local health agencies, dental care programs, and other public or private nonprofit institutions	Cost-sharing by grantee	Division of Dental Health, BHPEMT, NIH, PHS, DHEW, 8120 Woodmont Ave., Bethesda, Md. 20014
<b>Appalachian Regional Commission</b>				
Demonstration Health Facilities	To provide assistance for the operation (including equipment other than initial equipment) of multi-county health facilities	State, political subdivision of a State, or a local development district	Federal share may vary from 50-100%	Appalachian Regional Commission, 1666 Connecticut Ave., N.W., Washington, D.C. 20009

Program	Purpose	Eligible Applicants	Matching Required	Where to Obtain Additional Information
<b>PROJECT GRANTS</b>				
<i>Housing and Urban Development</i>				
Model Cities Program	To provide funds for a comprehensive attack on social, economic, and physical problems in selected slum and blighted areas	Municipalities, counties, or other public bodies having general governmental powers	Federal share 80%	DHUD Regional Offices
Mortgage Insurance Program	To provide mortgage insurance to assist in financing the construction and equipment of group practice facilities, including the cost of land acquisition	Units or organizations engaged in the group practice of dentistry, medicine or optometry	Insurance premium not to exceed 1%	DHUD Regional Offices
Advances for Public Works Planning	To provide interest-free advances to assist planning for local public works (including health facilities)	States, municipalities, and other non-Federal public agencies	None	DHUD Regional Offices
Grants for Advance Acquisition of Land	To provide grants, not to exceed the interest charges on a loan incurred, to encourage communities to acquire land for future construction of public works and facilities	Local public bodies or agencies	None	DHUD Regional Offices

Program	Purpose	Eligible Applicants	Matching Required	Where to Obtain Additional Information
<b>PROJECT GRANTS</b>				
<b>National Science Foundation</b>				
Basic Research	To support basic research in fields of science, including biological and medical sciences	Colleges and universities, or nonprofit research institutions (in special cases, private organizations or individuals)	None	National Science Foundation, Washington, D.C. 20550
<b>Grants for Other Purposes Connected with Research</b>				
—Foreign Travel	To support attendance of U.S. scientists at selected scientific conferences abroad or for visits of U.S. scientists to institutions and laboratories abroad for the purposes of conducting research or acquiring scientific information	Individuals	None	National Science Foundation, Washington, D.C. 20550
—Scientific Conferences	To support conferences in special areas of science which bring together leading scientists to discuss recent research findings	Educational institutions or scientific societies	None	National Science Foundation, Washington, D.C. 20550



Program	Purpose	Eligible Applicants	Matching Required	Where to Obtain Additional Information
<b>PROJECT GRANTS</b>				
<b>National Science Foundation</b>				
Grants for Purposes Connected with Research (continued)				
—Specialized Research Equipment and Facilities	To assist in the acquisition of facilities of a specialized nature, such as nuclear accelerators, computers, etc.	Institutions engaged in appropriate research	None	National Science Foundation, Washington, D.C. 20550
<b>Office of Economic Opportunity</b>				
Community Action Programs				
—Head Start	To help preschool children of limited opportunity prepare for kindergarten or first grade	Community Action Agencies or public or non-profit private agencies	Federal assistance generally may not exceed 80%	Division of Dental Health, BHPHPEMT, NIH, PHS, DHEW, 8120 Woodmont Ave., Bethesda, Md. 20014
—Follow Through	To continue and reinforce in the first three grades of elementary school the benefits gained in the Head Start program	Elementary schools	Federal assistance generally may not exceed 80%	Division of Dental Health, BHPHPEMT, NIH, PHS, DHEW, 8120 Woodmont Ave., Bethesda, Md. 20014

Program	Purpose	Eligible Applicants	Matching Required	Where to Obtain Additional Information
<b>PROJECT GRANTS</b>				
<b>Office of Economic Opportunity</b>				
<b>Community Action Programs (continued)</b>				
—Upward Bound	To provide a pre-college summer educational program for secondary school students who have been handicapped by economic, cultural, and educational deficiencies	Any accredited college, university, or secondary school with residential capacity	Federal assistance generally may not exceed 80%	Division of Dental Health, BHPEMT, NIH, PHS, DHEW, 8120 Woodmont Ave., Bethesda, Md. 20014
—Neighborhood Health Centers	To establish family-centered comprehensive, continuous ambulatory health care centers in easily accessible locations in impoverished areas	Community Action Agencies or public or non-profit private agencies	None	Division of Dental Health, BHPEMT, NIH, PHS, DHEW, 8120 Woodmont Ave., Bethesda, Md. 20014
—Parent and Child Centers	To provide health and counseling services to disadvantaged families with one or more children under 3 years of age	Community Action Agencies or public or non-profit private agencies	Federal assistance generally may not exceed 80%	Division of Dental Health, BHPEMT, NIH, PHS, DHEW, 8120 Woodmont Ave., Bethesda, Md. 20014
—Migrant Projects	To meet the special needs of migratory and seasonal farm workers in the areas of housing, health, sanitation, education of children, and day care for children	State and local public and private nonprofit agencies	None	Division of Dental Health, BHPEMT, NIH, PHS, DHEW, 8120 Woodmont Ave., Bethesda, Md. 20014

Program	Purpose	Eligible Applicants	Matching Required	Where to Obtain Additional Information
<b>PROJECT GRANTS</b>				
<b>Office of Economic Opportunity</b>				
Job Corps	To prepare young men and women for jobs through a residential training program providing basic education, skill training, and sound work experience	Job Corps Centers are established by OEO	None	Division of Dental Health, BHPEMT, NIH, PHS, DHEW, 8120 Woodmont Ave., Bethesda, Md. 20014
<b>VISTA</b>				
	To provide volunteers to work with the poor as teachers, counselors, nurses, etc.	Program organized by OEO	None	Division of Dental Health, BHPEMT, NIH, PHS, DHEW, 8120 Woodmont Ave., Bethesda, Md. 20014
Work Experience Program	To provide funds for projects to help unemployed fathers and other needy persons to gain work experience and job training	State public welfare agencies	None	Social and Rehabilitation Service, DHEW, Washington, D.C. 20201
Neighborhood Youth Corps	To provide economically deprived high school dropouts with practical work experience and on-the-job training	Local groups	Federal share up to 90%	Bureau of Work Programs, Department of Labor, Washington, D.C. 20036

Program	Purpose	Eligible Applicants	Matching Required	Where to Obtain Additional Information
<b>PROJECT GRANTS</b>				
<b>Office of Education</b>				
Vocational Education Research	To help present and prospective members of the labor force acquire basic knowledge, occupational and personal skills so they can become economically self-supporting. Grants are available to assist in financing pilot and experimental programs and demonstration projects	Colleges and universities, State boards of education, public or private nonprofit research agencies, local educational institutions	Varies	Bureau of Research, OE, DHEW, Washington, D.C. 20202
Supplementary Centers and Services Program (Title III ESEA)	To stimulate and assist in the provision of educational services not available in sufficient quantity or quality, and to stimulate and assist in the development and establishment of exemplary educational programs to serve as models for regular school programs	Local or intermediate educational agencies	None	Bureau of Elementary and Secondary Education, OE, DHEW, Washington, D.C. 20202
Research and Demonstration in New Educational Media	To conduct, assist, and foster research and experimentation in educational uses of communications media	Educational institutions, public or nonprofit private agencies, groups or individuals	None	Bureau of Research, OE, DHEW, Washington, D.C. 20202

Program	Purpose	Eligible Applicants	Matching Required	Where to Obtain Additional Information
<b>PROJECT GRANTS</b>				
<b>Office of Education</b>				
College and Research Library Resources	To help institutions of higher education and research libraries obtain resource materials	Institutions of higher education and research libraries	Varies	Bureau of Adult, Vocational, and Library Programs, OE, DHEW, Washington, D.C. 20202
<b>Social and Rehabilitation Service</b>				
<b>Maternal and Child Health and Crippled Children's Services</b>				
—Maternal and Child Health Services	To provide funds for special projects for mentally retarded children and projects which may contribute to the advancement of maternal and child health	State agencies or public or other nonprofit institutions of higher learning	None	Children's Bureau, SRS, DHEW, Washington, D.C. 20201
—Crippled Children's Services	To provide funds for special projects for crippled children who are mentally retarded and projects which may contribute to the advancement of services for crippled children	State agencies or public or other nonprofit institutions of higher learning	None	Children's Bureau, SRS, DHEW, Washington, D.C. 20201

Program	Purpose	Eligible Applicants	Matching Required	Where to Obtain Additional Information
<b>PROJECT GRANTS</b>				
<b>Social and Rehabilitation Service</b>				
<b>Maternal and Child Health and Crippled Children's Services (continued)</b>				
—Comprehensive Health Services for Children and Youth	To provide comprehensive health services for preschool and schoolage children, particularly in low-income areas	State or local health agencies, State crippled children's agencies, schools of medicine (with appropriate participation by a school of dentistry), or teaching hospitals	Federal share may not exceed 75%	Children's Bureau, SRS DHEW, Washington, D.C. 20201
—Maternity and Infant Care	To help reduce the incidence of mental retardation and other handicapping conditions caused by complications associated with childbearing, and to help infant and maternal mortality	State or local health agencies and public or nonprofit private agencies	Federal share may not exceed 75%	Children's Bureau, SRS, DHEW, Washington, D.C. 20201
—Dental Health of Children (National Children's Dental Health Program)	To promote the dental health of children and youth of school or preschool age particularly in areas of low-income families	State or local health agencies and public or nonprofit private agencies	Federal share may not exceed 75%	Children's Bureau, SRS, DHEW, Washington, D.C. 20201

Program	Purpose	Eligible Applicants	Matching Required	Where to Obtain Additional Information
<b>PROJECT GRANTS</b>				
<b>Social and Rehabilitation Service</b>				
<b>Maternal and Child Health and Crippled Children's Services (continued)</b>				
—Research Relating to MCH and CC Services	To provide funds for research projects that may contribute to the advancement of health services for mothers and children	Public or nonprofit institutions of higher learning or public or nonprofit private agencies and organizations engaged in MCH or CC research or programs	Cost-sharing by grantee	Children's Bureau, SRS, DHEW, Washington, D.C. 20201
Research and Development (related to aging)	To support research and demonstration in the areas of aging	Public and nonprofit private agencies	Secretary of DHEW can require grantees to contribute	Administration on Aging, SRS, DHEW, Washington, D.C. 20202
Research and Development in Vocational Rehabilitation	To assist in conducting research or demonstration projects or establish special facilities and services which promise to contribute to the solution of VR problems common to all or several States	State and other public agencies and private nonprofit organizations	Administrative determination	Division of Grants Management, SRS, DHEW, Washington, D.C. 20201

Program	Purpose	Eligible Applicants	Matching Required	Where to Obtain Additional Information
<b>PROJECT GRANTS</b>				
<b>Veterans Administration</b>	To promote a close educational, scientific, and professional link between VA hospitals and major medical centers (May include construction of facilities and purchase of equipment)	Medical and dental schools, hospitals, and research centers, or individuals of the health professions	None	Department of Medicine and Surgery, Veterans Administration, Washington, D.C. 20420
<b>Exchange of Medical Information</b>				



Program	Purpose	Eligible Applicants	Matching Required	Where to Obtain Additional Information
<b>TRAINING GRANTS</b>				
<b>Public Health Service</b>				
Comprehensive Health Planning—Training, Studies, and Demonstrations*	To support projects for training, studies, or demonstrations for the development of improved or more effective comprehensive health planning throughout the Nation	Public or private nonprofit agencies	None	DHEW Regional Offices
Fellowships and Research Career Program	To support qualified students, physicians, dentists, scientists, and others to increase the number of individuals qualified to undertake research and provide training for research	Individuals or research institutions on behalf of individuals	None	Division of Dental Health, BHPEMT, NIH, PHS, DHEW, 8120 Woodmont Ave., Bethesda, Md. 20014
Graduate Training Grants (Research training)	To establish new or augment existing training programs for the purpose of increasing the supply of trained research personnel for the conduct of health-related studies	Public and other nonprofit academic institutions	None	Division of Dental Health, BHPEMT, NIH, PHS, DHEW, 8120 Woodmont Ave., Bethesda, Md. 20014
Dental Auxiliary Utilization Training	To train dental students in the use of dental auxiliaries	Schools of dentistry	None	Division of Dental Health, BHPEMT, NIH, PHS, DHEW, 8120 Woodmont Ave., Bethesda, Md. 20014

\*Replaces training grants in categorical program areas

Program	Purpose	Eligible Applicants	Matching Required	Where to Obtain Additional Information
<b>TRAINING GRANTS</b>				
<b>Public Health Service</b>				
Allied Health Professions				
—Advanced Training	To train allied health professions personnel to teach health services technicians or serve in administrative or supervisory capacities	Public or non-profit private junior colleges, colleges, or universities qualifying as training centers for the allied health professions	None	Division of Dental Health, BHPEMT, NIH, PHS, DHEW, 8120 Woodmont Ave., Bethesda, Md. 20014
—Developmental Grants	To develop, demonstrate, or evaluate curriculums for the training of new types of health technologists	Public or non-profit private junior colleges, colleges, or universities qualifying as training centers for the allied health professions	None	Division of Dental Health, BHPEMT, NIH, PHS, DHEW, 8120 Woodmont Ave., Bethesda, Md. 20014

Program	Purpose	Eligible Applicants	Matching Required	Where to Obtain Additional Information
<b>TRAINING GRANTS</b>				
<b>Public Health Service</b>				
Continuing Dental Education	To provide courses in new and advanced methods and techniques for the practicing dentist and continuing dental education for practitioners in both general and special areas	Recognized schools of dentistry, extension schools or departments of colleges and universities, and teaching hospitals	None	Division of Dental Health, BHPMENT, NIH, PHS, DHEW, Dental Health Center, 14th Ave. and Lake St., San Francisco, Calif. 94118
Graduate Training in Public Health	To strengthen or expand curriculums in institutions providing graduate or specialized training in public health offered at the post-baccalaureate or post-professional level	Accredited schools of public health, nursing, engineering, departments of preventive medicine in accredited schools of medicine, and departments of preventive or community dentistry in accredited schools of dentistry	None	Division of Allied Health Manpower, BHPMENT, NIH, PHS, DHEW, Bethesda, Md. 20014



Program	Purpose	Eligible Applicants	Matching Required	Where to Obtain Additional Information
<b>TRAINING GRANTS</b>				
<i>Public Health Service</i>				
International Health Research	To provide stipends for advanced researchers for medical research and collaboration with research personnel and institutions abroad	Qualified U.S. universities	None	Fogarty International Center for Advanced Study in the Health Sciences, NIH, PHS, DHEW, Bethesda, Md. 20014
NIDR Research Training Grant Program	To train professionals in the field of research and teaching in dentistry	Schools of dentistry and other schools at the graduate level	None	National Institute of Dental Research, NIH, PHS, DHEW, Bethesda, Md. 20014
NIDR Fellowship Program	To train professionals in research and teaching in dentistry	Qualified graduate students	None	National Institute of Dental Research, NIH, PHS, DHEW, Bethesda, Md. 20014
Public Health Traineeships —Awards to Individuals	To support graduate or specialized public health training for careers in public health or to improve effectiveness of public health workers	Members of all health professions whose skills are required in modern public health practice	None	Division of Allied Health Manpower, BHPENMT, NIH, PHS, DHEW, Bethesda, Md. 20014



Program	Purpose	Eligible Applicants	Matching Required	Where to Obtain Additional Information
<b>TRAINING GRANTS</b>				
<b>Public Health Service</b>				
Public Health Traineeships (continued)				
—Apprenticeship Training	To provide support for medical and dental students engaged in preceptor-guided apprenticeship training in specialized public health areas	Public or non-profit institutions prepared to provide the proposed training	None	Division of Allied Health Manpower, BHPEMT, NIH, PHS, DHEW, Bethesda, Md. 20014
—General Purpose Traineeships	To provide grants to schools for traineeships in the graduate or specialized public health training program of the school	Institutions which have accredited schools of public health	None	Division of Allied Health Manpower, BHPEMT, NIH, PHS, DHEW, Bethesda, Md. 20014
—Residency Programs	To support residency training to encourage physicians and dentists who have completed their basic professional training to prepare for positions of leadership in public health practice and teaching	Training institutions or agencies offering approved residency program in preventive medicine or dentistry (on behalf of individuals)	None	Division of Allied Health Manpower, BHPEMT, NIH, PHS, DHEW, Bethesda, Md. 20014

Program	Purpose	Eligible Applicants	Matching Required	Where to Obtain Additional Information
<b>TRAINING GRANTS</b>				
<i>Public Health Service</i>				
Public Health Traineeships (continued)				
—Short-Term Training	To provide training designed to update professional knowledge and skills and to decrease the time lag between discovery and application of new knowledge	Public or non-profit private institutions prepared to provide graduate or specialized short-term training for professional health personnel	None	Division of Allied Health Manpower, BHPEMT, NIH, PHS, DHEW, Bethesda, Md. 20014
—Special Purpose	To provide grants to schools for awarding traineeships in designated curriculum areas to which high priority has been given	Any school or department in an accredited institution conducting training in areas designated as "Special Purpose Areas"	None	Division of Allied Health Manpower, BHPEMT, NIH, PHS, DHEW, Bethesda, Md. 20014

Program	Purpose	Eligible Applicants	Matching Required	Where to Obtain Additional Information
<b>TRAINING GRANTS</b>				
<b>Office of Education</b>				
Manpower Development and Training	To provide classroom vocational training to unemployed and underemployed youth and adults or workers faced with displacement due to technological and economic changes	State educational agencies or public or private local training agencies	Federal share 90%	Bureau of Adult and Vocational Education, OE, DHEW, Washington, D.C. 20202
Education Professions Development	To improve the quality of teaching and to help meet critical shortages of adequately trained educational personnel	State or local education agencies, institutions of higher education, or other public or non-profit organizations or institutions	None	Bureau of Educational Personnel Development, OE, DHEW, Washington, D.C. 20202
<b>Department of Labor</b>				
Manpower Development and Training	To provide on-the-job vocational training to unemployed and underemployed youth and adults or workers faced with displacement due to technological and economic changes	State employment agencies	None	Manpower Administration, U.S. Department of Labor, Washington, D.C. 20210

Program	Purpose	Eligible Applicants	Matching Required	Where to Obtain Additional Information
<b>TRAINING GRANTS</b>				
<i>Social and Rehabilitation Service</i>				
Specialized Training of Professional and Technical Persons (for the care of the aging)	To meet in whole or in part the costs of the specialized training of professional or technical persons needed to carry out programs for the aging	Public or non-profit private agencies	Secretary of DHEW can require grantees to contribute	Administration on Aging, SRS, DHEW, Washington, D.C. 20201
Training and Traineeships in Vocational Rehabilitation				
—Long-Term Training	To increase the supply of personnel in the professional fields involved in rehabilitation of disabled persons	States and public or other non-profit organizations	Administrative determination	Division of Grants Management, SRS, DHEW, Washington, D.C. 20201
—Research Fellowships	Advanced training in professional field which contributes to vocational rehabilitation services	Citizens affiliated at a qualified institution or agency	None	Division of Grants Management, SRS, DHEW, Washington, D.C. 20201
—Short-Term Training	Instruction in technical matters relating to vocational rehabilitation services	Individuals or public voluntary agencies	None	Division of Grants Management, SRS, DHEW, Washington, D.C. 20201



Program	Purpose	Eligible Applicants	Matching Required	Where to Obtain Additional Information
<b>TRAINING GRANTS</b>				
<b>Social and Rehabilitation Service</b>				
Training of Professional Personnel for the Care of Crippled Children	To help institutions of higher learning provide special training to more professional personnel to enable them to work with crippled children	Public or other nonprofit institutions of higher learning	None	Children's Bureau, SRS, DHEW, Washington, D.C. 20201
Training of Health Personnel	To train personnel for health care and related services for mothers and children, particularly mentally retarded children and children with multiple handicaps	Public or nonprofit private institutions of higher learning	None	Children's Bureau, SRS, DHEW, Washington, D.C. 20201
<b>Veterans Administration</b>				
Training and Education of Health Service Personnel	To train and educate health service personnel in cooperation with schools or other nonprofit agencies or organizations	Schools of medicine, dentistry, osteopathy, and nursing, or other institutions of higher learning, medical centers, hospitals, or appropriate public or nonprofit agencies	None	Department of Medicine and Surgery, Veterans Administration, Washington, D.C. 20420

Program	Purpose	Eligible Applicants	Matching Required	Where to Obtain Additional Information
<b>CONSTRUCTION GRANTS</b>				
<b>Public Health Service</b>				
Assistance to Medical Libraries	To assist in the construction of new and the renovation, expansion, or rehabilitation of existing medical library facilities	Public or private nonprofit agencies or institutions	Federal share up to 75%	National Library of Medicine, NIH, PHS, DHEW, Bethesda, Md. 20014
Health Professions Educational Facilities	To construct or renovate teaching facilities for health professions	Accredited public or nonprofit private medical, dental, public health, nursing or other institutions	Federal share 50% to 66 $\frac{2}{3}$ %	Division of Dental Health, BHPPEMT, NIH, PHS, DHEW, 8120 Woodmont Ave., Bethesda, Md. 20014
Allied Health Professions Educational Facilities	To construct new or renovate existing facilities for training centers for allied health professions	Universities, colleges, and junior colleges	Federal share 50% to 66 $\frac{2}{3}$ %	Division of Dental Health, BHPPEMT, NIH, PHS, DHEW, 8120 Woodmont Ave., Bethesda, Md. 20014
Health Research Facilities	To construct facilities for research in the sciences related to health, including the fundamental sciences	Universities and other public and nonprofit institutions	Federal share up to 50%	Division of Research Facilities and Resources, NIH, DHEW, Bethesda, Md. 20014

Program	Purpose	Eligible Applicants	Matching Required	Where to Obtain Additional Information
<b>CONSTRUCTION GRANTS</b>				
<b>Public Health Service</b>				
Community Mental Health Centers	To assist in the construction of completely new facilities or the remodeling or expansion of existing facilities for the treatment of mental illness	Private nonprofit organizations or State and other public agencies	Federal share 33 $\frac{1}{3}$ % to 66 $\frac{2}{3}$ %	Division of Hospital and Medical Facilities, PHS, DHEW, Willste Building, 7915 Eastern Avenue, Silver Spring, Md. 20919
Mental Retardation Facilities				
—Research Centers	To assist in the construction of centers for research on mental retardation and related aspects of human development	Approved universities and other public and private nonprofit institutions	Federal share up to 75%	National Institute of Child Health and Human Development, NIH, DHEW, Bethesda, Md. 20014
—University-Affiliated Clinical Facilities	To assist in the construction of facilities to include a full range of clinical services for the mentally retarded	Public and nonprofit agencies sponsoring facilities affiliated with a university or college	Federal share up to 75%	Division of Hospital and Medical Facilities, PHS, DHEW, Willste Building, 7915 Eastern Avenue, Silver Spring, Md. 20919
—Public or Nonprofit Facilities for the Mentally Retarded	To assist in construction of public and other nonprofit facilities for the mentally retarded	State mental retardation agencies	Federal share 33 $\frac{1}{3}$ % to 66 $\frac{2}{3}$ %	Division of Hospital and Medical Facilities, PHS, DHEW, Willste Building, 7915 Eastern Avenue, Silver Spring, Md. 20919

Program	Purpose	Eligible Applicants	Matching Required	Where to Obtain Additional Information
<b>CONSTRUCTION GRANTS</b>				
<b>Public Health Service Hospital and Medical Facilities</b>	To construct hospitals, public health centers, diagnostic and treatment centers, rehabilitation facilities, and nursing homes (Dental clinical facilities may be included)	Private nonprofit organizations, States, and other public agencies	Federal share 33 1/3 % to 66 2/3 %	Division of Hospital and Medical Facilities, PHS, DHEW, Willste Bldg., 7915 Eastern Ave., Silver Spring, Md. 20910
<b>Appalachian Regional Commission</b>				
<b>Demonstration Health Facilities</b>	To construct multi-county demonstration health facilities (including initial equipment)	States, political subdivisions of States, or local development districts	Federal share up to 80%	Appalachian Regional Commission, 1666 Connecticut Ave., N.W., Washington, D.C. 20009
<b>Department of Agriculture</b>				
<b>Financial Assistance to Small Towns and Rural Groups</b>	Loans or grants to develop and expand domestic water supply systems and waste disposal systems including improvement or establishment of treatment procedures for health purposes (May include fluoridation of water supplies)	Public or quasi-public bodies and nonprofit organizations primarily serving rural residents	<i>Loans:</i> Federal share up to 100%  <i>Grants:</i> Federal share up to 50%	Farmers Home Administration, Dept. of Agriculture, Washington, D.C. 20250

Program	Purpose	Eligible Applicants	Matching Required	Where to Obtain Additional Information
<b>CONSTRUCTION GRANTS</b>				
<b>Housing and Urban Development</b>				
Basic Sewer and Water Facilities	To assist and encourage communities of the Nation to construct adequate basic sewer and water facilities, including works for the storage, treatment, purification, and distribution of water (May include fluoridation of water supplies)	Local public bodies or agencies	Federal share up to 50%	DHUD Regional Offices
Neighborhood Facilities	To provide neighborhood facilities for programs of health, recreation, social, or similar necessary community services oriented to low-income areas	Local public bodies or agencies and private non-profit organizations	Federal share up to 75%	DHUD Regional Offices
<b>National Science Foundation</b>				
Graduate Science Facilities	To support the renovation and construction of those portions of facilities (excluding classrooms) that are to be used for basic scientific research or for graduate training in the sciences	Institutions of higher education and eligible non-profit research institutions	\$1 for \$1	National Science Foundation, Washington, D.C. 20550
<b>Office of Education</b>				
Area Vocational Schools	To support area vocational school construction	State boards for vocational education	\$1 for \$1	Bureau of Adult, Vocational, and Library Programs, OE, DHEW, Washington, D.C. 20202

Program	Purpose	Eligible Applicants	Matching Required	Where to Obtain Additional Information
<b>CONSTRUCTION GRANTS</b>				
<b>Office of Education</b> Higher Education Facilities	To help finance construction, re- habilitation, or improvement of needed academic and related facilities in undergraduate and graduate institutions	Public and pri- vate institutions of higher education	Varies	Bureau of Higher Education, Office of Education, DHEW, Washington, D.C. 20202
<b>Veterans Administration</b> Construction of Facilities for the Exchange of Medical Information	To assist in the construction of facilities and the purchase of equip- ment necessary for carrying out medical information exchange programs	Medical and dental schools, hospitals, and research centers, or individuals of the health professions	None	Department of Medicine and Surgery, Veterans Administration, Wash- ington, D.C. 20420

Program	Purpose	Eligible Applicants	Matching Required	Where to Obtain Additional Information
<b>STUDENT LOANS AND SCHOLARSHIPS</b>				
<b>Public Health Service</b>				
Health Professions Student Loans	To establish loan funds to increase the opportunities for the training of physicians, dentists, and other health professionals	Accredited public and nonprofit private schools of medicine, dentistry, osteopathy, and optometry	Federal share 90%	Division of Health Manpower Educational Services, BHPEMT, NIH, PHS, DHEW, Bethesda, Md. 20014
Health Professions Scholarship Grants	To provide funds for scholarships for students in medicine, osteopathy, dentistry, optometry, pharmacy, and podiatry	Accredited schools of medicine, osteopathy, dentistry, optometry, pharmacy, or podiatry	None	Division of Health Manpower Educational Services, BHPEMT, NIH, PHS, DHEW, Bethesda, Md. 20014
Allied Health Professions Student Loans	To provide funds for loans to students in the allied health professions	Public or non-profit private junior colleges, or universities qualifying as training centers for the allied health professions	Federal share 90%	Division of Health Manpower Educational Services, BHPEMT, NIH, PHS, DHEW, Bethesda, Md. 20014

Program	Purpose	Eligible Applicants	Matching Required	Where to Obtain Additional Information
<b>STUDENT LOANS AND SCHOLARSHIPS</b>				
<b>Office of Education</b>				
Loans to Students in Institutions of Higher Education (NDEA)	To establish loan funds in colleges and universities to permit graduate and undergraduate students to continue education	Public or non-profit institutions of higher education	Federal share 90%	Bureau of Higher Education, OE, DHEW, Washington, D.C. 20202
College Work-Study Program	To provide part-time employment opportunities for students in institutions of higher education	Public or private nonprofit institutions of higher education	Federal share 85%	Bureau of Higher Education, OE, DHEW, Washington, D.C. 20202
Insured Loans and Interest Benefits for Higher Education Students	To establish State and Federal loan insurance programs and to pay a portion of the interest on student loans (for higher education students)	State and non-profit private institutions and organizations	None	Bureau of Higher Education, OE, DHEW, Washington, D.C. 20202
Insured Loans and Interest Benefits for Vocational Students	To establish State and Federal loan insurance programs and to pay a portion of the interest on student loans (for vocational students)	State and non-profit private institutions and organizations	None	Bureau of Higher Education, OE, DHEW, Washington, D.C. 20202
<b>Veterans Administration</b>				
Educational Benefits for Veterans	To provide educational assistance to veterans of the Armed Forces	Qualified veterans	None	Veterans Benefits Office, VA, 2033 M Street, N.W., Washington, D.C. 20401



Program	Purpose	Eligible Applicants	Matching Required	Where to Obtain Additional Information
OTHER AID				
<i>Surplus Property</i>	To make surplus Federal personal and real property available to State and local health, educational, and civil defense agencies and institutions	State surplus property agencies	None	Division of Surplus Property Utilization, DHEW, Washington, D.C. 20201

# *Department of Health, Education, and Welfare*

## *Regional Offices*

Region	Address	States in Region
I	John Fitzgerald Kennedy Federal Building Boston, Massachusetts 02203	Connecticut, Maine, Massachusetts, New Hampshire, Rhode Island, Vermont
II	26 Federal Plaza New York, New York 10007	Delaware, New Jersey, New York, Pennsylvania
III	220 Seventh Street, N.E. Charlottesville, Virginia 22901	District of Columbia, Kentucky, Maryland, North Carolina, Puerto Rico, Virginia, Virgin Islands, West Virginia
IV	50 Seventh Street, N.E. Atlanta, Georgia 30323	Alabama, Florida, Georgia, Mississippi, South Carolina, Tennessee
V	433 West Van Buren Street Chicago, Illinois 60607	Illinois, Indiana, Michigan, Ohio Wisconsin
VI	601 East 12th Street Kansas City, Missouri 64106	Iowa, Kansas, Minnesota, Missouri, Nebraska, North Dakota, South Dakota
VII	1114 Commerce Street Dallas, Texas 75202	Arkansas, Louisiana, New Mexico, Oklahoma, Texas
VIII	19th and Stout Streets Denver, Colorado 80202	Colorado, Idaho, Montana, Utah, Wyoming
IX	50 Fulton Street San Francisco, California 94102	Alaska, American Samoa, Arizona, California, Guam, Hawaii, Nevada, Oregon, Washington

# *Department of Housing and Urban Development*

## *Regional Offices*

Region	Address	States in Region
I	346 Broadway New York, New York 10013	Connecticut, Maine, Massachusetts, New Hampshire, New York, Rhode Island, Vermont
II	Widener Building Chestnut and Juniper Streets Philadelphia, Pennsylvania 19107	Delaware, District of Columbia, Maryland, New Jersey, Pennsylvania, Virginia, West Virginia
III	Peachtree-Seventh Building Atlanta, Georgia 30323	Alabama, Florida, Georgia, Kentucky, Mississippi, North Carolina, South Carolina, Tennessee
IV	360 North Michigan Avenue Chicago, Illinois 60601	Illinois, Indiana, Iowa, Michigan, Minnesota, Nebraska, North Dakota, Ohio, South Dakota, Wisconsin
V	Federal Office Building Fort Worth, Texas 76102	Arkansas, Colorado, Kansas, Louisiana, Missouri, New Mexico, Oklahoma, Texas
VI	450 Golden Gate Avenue San Francisco, California 94102	Alaska, Arizona, California, Guam, Hawaii Idaho, Montana, Nevada, Oregon, Utah, Washington, Wyoming
VII	Ponce de Leon Avenue San Juan, Puerto Rico 00908	Puerto Rico, Virgin Islands